

What's on in August!

Sat 2nd	Dystonia self help group	St Martins Centre	2:00pm
Sun 3rd	Car Boot Sale	Whittington Castle	10:00am
Weds 5th	WI Norma Walmsley The King and I	St Martins Miners' Institute Lounge	7.00pm
Sat 9th	Grow It, Make It, Show It	St Martins Miners' Institute	2:00pm
Sat 9th	Car Boot Sale	St Martins Centre	9:00am
Sun 10th	Heritage Open Day Tours	Whittington Castle	10:00am
Sun 10th	Meadows Work Day/Green Gym	Colliery Entrance (Weather permitting)	1:30pm
Tues 12th	IMMC	St Martins Centre	7:30pm
Wed 13th	Weston Rhyn Gardening Club Look forward to your Winter Garden	Weston Rhyn Institute	7.30pm
Thurs 14th	Parish Council Meeting	St Martins Centre	7.00pm
Sun 17th	The House of the Blackstar - Living History Day	Whittington Castle	10:00am
20th-Oct 1st	Wrexham Art Group Exhibition	Whittington Castle	10:00am
Thurs 21st	3Parishes Wildlife Group Vaughan & Carl Green	Chirk Castle (Meet at car park)	Contact Polly Smith 01691 239087
Sat 23rd	Car Boot Sale	St Martins Centre	9:00am
Sun 24th	Harvest Festival	Ellesmere Road Chapel	11.00am
Mon 25th	Harvest Supper	Ellesmere Road Chapel	6:30pm

Please let us know the time and date of events in October & November for the next edition of Village Life by no later than **Wednesday 13th September 2017**

If you send us an article for the next edition, please bear in mind that it will be delivered at the end of September, so any events you report on will have happened before then. If you want to mention any upcoming events or activities please make sure they are in October & November (or later).

Scout and about

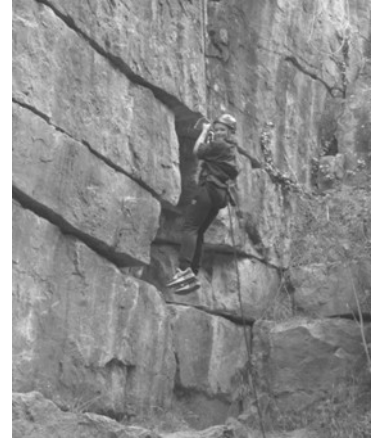
2nd St Martins Scouts have had an exciting summer term, full to the brim with fun-filled activities for the youngest beaver up to the eldest scout.

While our leaders take a much-deserved break, we'd like to thank all our parents and volunteers for their support. Special thanks to our committee and Chairman Steve Davenport, who oversee the group and make sure we're on track and heading in the right direction. Without volunteers our children wouldn't get the opportunities to make friends, have fun, learn new skills and grow. If you'd like to help, please get in touch.

Scaling new heights

Llanymynech quarry was the setting for one of the scouts most challenging activities – rock climbing and abseiling.

Kitted out with safety helmets and harnesses, the group had a number of routes to choose at this stunning part of Shropshire that meets Wales. The scouts had to overcome their fear of heights, put their trust in our leaders and be prepared to step off the cliff and make their descent.



Splashing fun!

A good spell of weather meant only one thing..... a trip to Pont Y Blew for the cubs and beavers.

With one leader stationed down river and another up river, the children had a splashing good time in the sunshine. Lots of parents joined as spectators – some even took a dip!

On target!

One of the benefits of being a leader with the scouts is learning new skills – and receiving training to share them with our children. Leaders Nic and Rob Pickles are fully qualified in archery.

With the support of St Martins School, our beavers and cubs had a fantastic archery session on the playing fields.



Back to basics

Whatever your age, there's something special about simple cooking on a campfire – known as backwoods cooking.

Backwoods cooking takes our group back to that simple pleasure - although kitchen foil is a pretty useful modern invention. The group is pictured here happily waiting for their skewers of bannock or campfire bread twisted round a stick.



2nd St Martins Beavers meet on Mondays at 5pm to 6pm; Cubs meet Mondays at 6:15pm to 7:30pm; and Scouts meet Wednesdays 7pm to 8:30pm in winter, extending to 9pm in the summer. Contact Barry Evans on **07921 838120** if you would like to know more.

My money matters

My money matters is a community focused project that helps people with budgeting and managing their household finances.

Commissioned by Three Parishes Big Local, it is being delivered by Citizens Advice Shropshire in the villages of Gobowen, Weston Rhyn and St Martins.

If you need help with :-

- Budgeting
- Income maximisation
- Switching tariffs
- Welfare benefits
- Debt advice
- Life events that impact on your finances: like having a baby, buying a home, starting a new job or retiring



Come along and meet your My Money Matters Community Adviser - Karen Williams who will be at the Community Centre in St Martins every Tuesday between 10 and 12.

She will work with you to find out:

1. What is best for you
2. What is appropriate for your specific situation
3. What is realistic
4. What is sustainable and takes into account your future circumstances.



Our Summer Timetable at St Martins Centre is as follows:-

August 2017	1st Drop in sessions
	8th Managing Money workshop
	15th Drop in sessions
	22nd Shopping habits & avoiding waste workshop
	29th Drop in sessions/Community focus group



Weston Rhyn • St Martins • Gobowen

Village Volunteering

Three Parishes
Big Local
Weston Rhyn • St Martins • Gobowen

 **LOTTERY FUNDED**



Through the spring and early summer we've seen an increase in enquiries about volunteering in the area, with more people coming forward to get involved. Some have been retired people looking for something to keep them busy and others have been younger people hoping to gain some experience. All of them have been surprised by the number of opportunities right here in the village. Find out how you could make a real difference in your local community by coming to one of our monthly drop in sessions.

We are also looking to hear from groups in the area who need volunteers. We can advertise opportunities for you and support you with all aspects of managing volunteers. Come along to the drop-in or give us a call.

**Every 1st Tuesday 10am-12pm -
St Martins Centre**

1st Aug, 5th Sept, 3rd Oct, etc

Or contact **Alex at Qube**

01691 656882 / volunteering@big-local.org



Homefix Plumbing and Heating

We are a small family run business and have one of our team living in your area.



Gas Boiler Servicing
and Installation
Full Bathroom Refit Packages
Any plumbing, taps, toilets

Gas Safe Registered

Free quotations and
no call out fees.

For an
appointment
please call
Vanessa on

01588 620250

www.homefixplumbingandheating.co.uk

email: homefixplumbing@yahoo.co.uk

 Grow It, Make It, Show It

St Martins 5th Annual Show

At St Martins Miners' Institute

Saturday 9th September 2017

Competition Entry 25p
(Children's Competitions Free)

Spectators 50p
(Under 12 years and Exhibitors Free)

Raffle

Door open for exhibitors 9:30am

Judging 11am – 1 pm

Doors Open to Public 2.00pm
Prize Giving 3pm

All entries must be booked in on
Friday 8th Sept

Between 5:30 - 7:30pm at St Martins Miners' Institute

Grow It, Make It, Show It

It's that time of year that we need to plan ahead for this year's show. Getting that bit of knitting finished or sowing those seeds, completing that picture, whatever it is that shows your capability, that flair. The list of classes are as follows, what can you do?

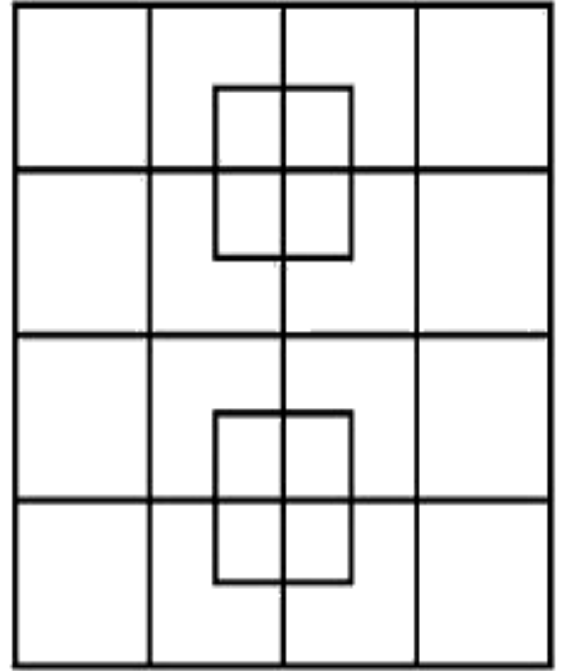
Please note that the show this year is at the Miners' Institute on Saturday 9th September 2017. The RAFFLE tickets will be on sale soon **1st prize** will be a Helicopter Ride. **2nd prize** £50 cash. **3rd prize** 2 bottles of Vintage Wine and many, many more. Last year we were able to donate £100 to the Ifton Colliery Commemorative Project and would love to do the same this year, so please support us and know we can continue next year.

<u>Class</u>	<u>Section A : Vegetables</u>	<u>Class</u>	<u>Section B : Flowers and Plants</u>
A1.	3 Potatoes	B20.	5 Dahlias Pompom, any size
A2.	5 Runner Beans	B21.	3 Dahlias (decorative)
A3.	3 Onions (10 oz. and under)	B22.	1 Dahlia (large)
A4.	3 Onions (over 10 oz.)	B23.	3 Dahlias, Cactus or semi Cactus
A5.	5 Shallots	B24.	1 specimen HT Rose
A6.	1 Pumpkin	B25.	3 Gladioli
A7.	3 Leeks	B26.	5 Sweet Pea Stems
A8.	3 Carrots (with tops trimmed and tied)	B27.	1 Lily home grown stem (any variety)
A9.	3 Beetroot (with tops trimmed and tied)	B28.	3 Hydrangeas
A10.	3 Courgettes (not exceeding 150mm/6 ins)	B29.	1 Vase of Flowers (5stems any variety)
A11.	1 Marrow or oversized courgette (Heaviest)	B30.	Pot plant (flowering)
A12.	1 Cucumber	B31.	Pot plant (foliage)
A13.	Any Brassica	B32.	1 Cactus or Succulent
A14.	3 Tomatoes (any variety)	B33.	Fuchsia in any size pot
A15.	5 Cherry Tomatoes	B34.	Pelargonium (Geranium-upright only)
A16.	3 Cooking apples	B35.	Flower Arrangement in an unusual container (overall Height and width not exceeding 6")
A17.	3 Dessert apples		
A18.	Any Other 3 Fruit (same variety)		
A19.	Any other 3 Vegetable (same variety)		
<u>Class</u>	<u>Section C : Children's</u> <small>open to children aged 11 and younger on 1st September 2017, age to be stated on exhibit.</small>	<u>Class</u>	<u>Section D : Photographic</u> (Un-mounted and Un-framed Max 7" x 5")
C36.	Decorated Egg Carton (6)	D41.	Photograph – Within the Parish
C37.	Decorated Wooden Spoon	D42.	Photograph – Single Flower
C38.	Necklace made of Vegetables	D43.	Photograph – Pathways
C39.	Collage made from SEEDS	D44.	Photograph – Humours Photo with Caption
C40.	Picture any Medium, Bees & Butterflies		
<u>Class</u>	<u>Section E : Cookery</u>	<u>Class</u>	<u>Section F : Craft</u>
E45.	Victoria Sponge/Sandwich (Jam filled & Caster Sugar on Top)	F53.	Any Crochet Article
E46.	Fruit Loaf/Tea Loaf	F54.	Any Knitted Article
E47.	Apple Pie on an 8" plate	F55.	Any Patchwork/Quilting/Appique
E48.	Savoury Flan Max 8"	F56.	Any Tapestry/Cross-stitch
E49.	3 Sultana Scones (2" cutter)	F57.	Any other Embroidery
E50.	Homemade Soft Fruit Jam	F58.	Handmade Soft Toy
E51.	Homemade Jar of Churney (Recycled glass jars acceptable with either a new lid or cellophane)	F59.	Art (Paintings or Drawing)
E52.	Man Cake (must be made by a MAN)	F60.	Any Other Craft

SUDOKU

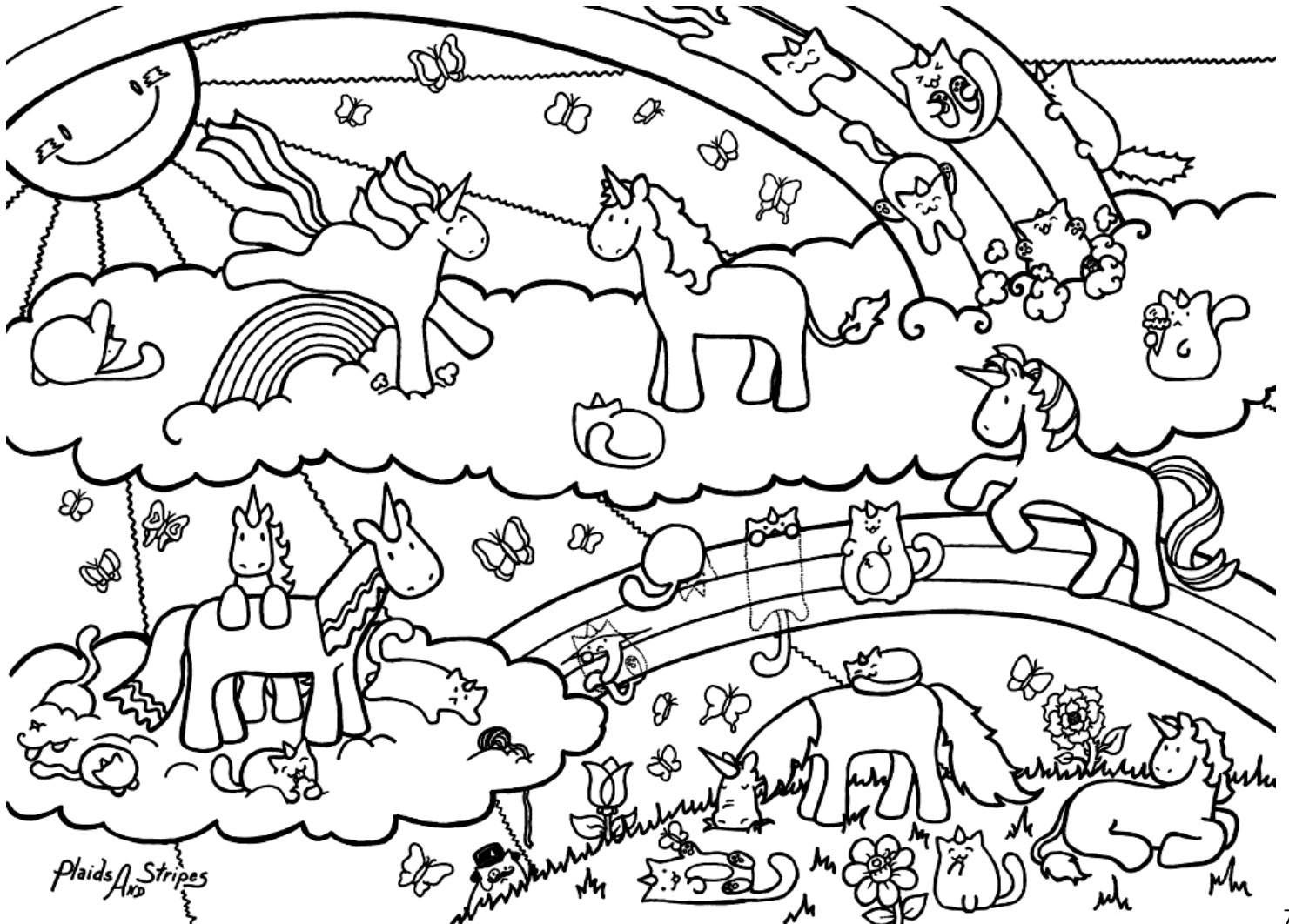
1	9		7	5		6	3
		7	4	6	5		
	2	5				4	7
8		6		5		7	9
5	2		3		1		6
	6	3				9	8
		8	3		2	6	
7	5		6	8		1	2

HOW MANY SQUARES?



I found _____ squares.

Here's a great picture for you to colour



Physical Training Puzzle

P M O V U B E F G D A M D F C P T E B D
A C K I I S A B I M J K M E D B R G H H
S P S F N B N L S F Y V Y S F N A P F T
G T P E J O R C A E T D E P A E I K O K
F J F L L N K F I N O T W I O C N M C N
R E K U Y R S J P B C V P R F K I D U R
D T O V E R C O M E C E S I J P N C S R
V Y S E P N G V X J T X I T M J G E K E
Z O C S R V V I J U N G S U W O N D G W
E N O T I T I S G R J E R H T L K N R A
V D N U N W D U R C O M M I T M E N T R
B K F D C A W A R E N E S S C G V H F D
R F I E I R M L X E S T E E M D S T Y S
A M D N P R I I X F R E V B P L T R N Q
V V E T L I N Z P H Y S I C A L R B X U
I H N S E O D A X Y H W P P W L E I K I
V M C U Z R H T W U Y Q O L S O N N B D
U S E G N P R I N C I P L E S V G M Q I
H U H E M D F O U N D A T I O N T B B W
E A R D V O S N A L T O K V H L H E R B

APPLY

AWARENESS

BALANCE

BODY

COMMITMENT

CONFIDENCE

DEFEND

DEFENSE

ESTEEM

FOCUS

FOUNDATION

JUNGSUWON

MIND

OVERCOME

PHYSICAL

PRINCIPLE

PRINCIPLES

REWARDS

SPIRIT

STRENGTH

STUDENTS

TRAINING

VISUALIZATION

WARRIOR

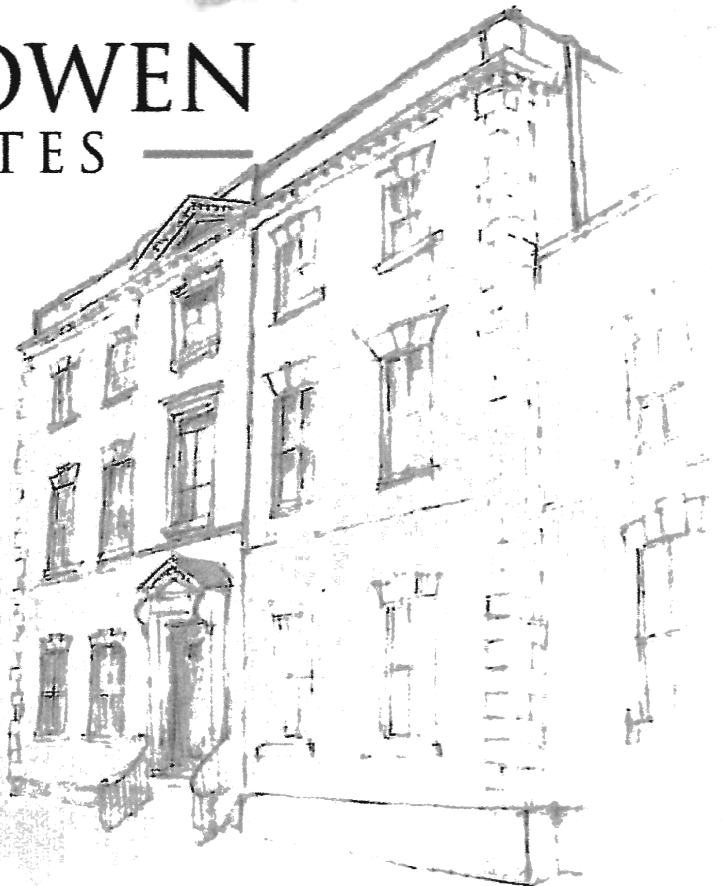
DEFIBRILLATOR

Great news: our own defibrillator is now available for us to use. Please contact the Ambulance service before accessing this equipment



HEWITT OWEN — ASSOCIATES —

- We are Chartered Building Engineers, providing both domestic and commercial **planning and architectural services**.
- We have been trading locally for **30 years** as David Owen Associates but have recently rebranded to Hewitt Owen Associates.
- We work in close association with other professional consultants to provide a full service from conception to completion.
- Contact us for a **FREE** initial consultation.



T: 01948 663004 • W: www.hewitt-owen.co.uk • E: enquiries@hewitt-owen.co.uk
The Mansion House | 21 Dodington | Whitchurch | Shropshire | SY13 1EA

1. Eloquence
2. Skein
3. Gaggle
4. Unkindness
5. Parliament or Building
6. Prickle
7. Cyclone
8. Gaze
9. Crash
10. Class

To the July Quiz from page 14

Answers

Condolences

Ces Rogers, a life long resident of St Martins and stalwart of many village clubs and organisation, died on 13th June 2017. Born and brought up on Rhyn Lane, the son of a miner and the youngest of four children, Ces worked for many years in the Chirk pit and later for an Oswestry agricultural supplies company . He will be missed but remembered by all who knew him.

Our deep commiserations to his friends and family.

Did I read that sign right?

**TOILET OUT OF ORDER.
PLEASE USE FLOOR BELOW**

In a Laundromat:

**AUTOMATIC WASHING
MACHINES:
PLEASE REMOVE ALL YOUR
CLOTHES WHEN THE LIGHT
GOES OUT**

In a London department store:

**BARGAIN BASEMENT
UPSTAIRS**

In an office:

**WOULD THE PERSON WHO TOOK THE STEP
LADDER YESTERDAY PLEASE BRING IT BACK
OR FURTHER STEPS WILL BE TAKEN**



Shopping Service

Do you need help with your shopping?

We have a fantastic team of volunteers that will do your weekly shopping for you.

They'll deliver and unpack everything and stay for a cuppa and a chat if you wish!

All you need to do is phone through an order to us at Qube each week and we'll take care of the rest!

For more information call Victoria Hughes at Qube on 01691 656882 or email v.hughes@qube-oca.org.uk

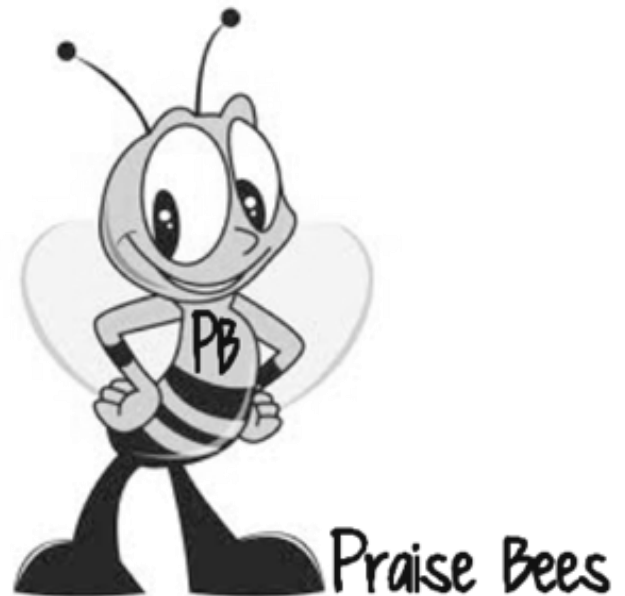


Ifton Meadows

Management Committee

On 16th June we visited Hunkington Nurseries for a talk on 'mason Bees' by Viv Marsh. Viv is a co-ordinator for the Charity Praise Bee.

Praise Bee is a charity set up in conjunction with the Church of England and other denominations for the express purpose of increasing the numbers of Mason bees across the UK. We had an interesting day and to give you an idea of what his charity does, I have copied a section from his website (see below). In 2017 Shropshire WI's were asked if they would place special bee boxes at churches throughout Shropshire and I believe that one has been placed at St.Martins Church. We plan to install some boxes at the Meadows next year. The only down side to any kind of bee house is that parasites also use these boxes and they in turn feed of the bee pupae.



The Mason bee (*Osmia bicornis*)



The solitary Red Mason bee (*Osmia bicornis*) is an indigenous bee - as it does not make any honey it is not aggressive and has no reason to sting. It has a short, five month life cycle in the spring from emerging as an adult to producing pupae and as such pollinates most plants more quickly than any other bee. In 2013, Viv Marsh and his team released nearly 500 bees across the Borough of Shrewsbury, after

nearly 10 years' research of these bees in the wild. These were dispersed to various locations in Shrewsbury and the surrounding area and resulted in 914 pupae to distribute in spring 2014. These pupae were duly distributed in spring 2014 into these locations which resulted in the subsequent harvest yield of 1,500 pupae were distributed in spring 2015 back into these and additional locations. This is ongoing with other organisations joining, for example, Shropshire WI in 2017.

Diary dates: We meet on the 2nd Tuesday of each month 7.30 p.m. at the Centre and our workdays are on the 2nd Sunday, meeting at Colliery (main entrance) at 1.30p.m.

Sunday Social Club



Our Social Club has now been running for ten months and our numbers are growing. Our ladies and some gentleman (and we could really do with a few more gentlemen attendees) have a great time with lots of conversation, cups of tea or coffee sandwiches and cake, quizzes, music and the like.

**The Club takes place at 3.30pm on the first Sunday of each month
at St. Martins Centre Lounge.**

**The next meeting will be on 6th August
with the following one on 3rd September.**

Please do come along.

If you wish further details please contact Mrs Valerie Thompson on 01691 658756.

If you have difficulty in travelling to the centre it may be possible to arrange transport for you.



DAVE

MEND-ALL

Est. 15 Years – Fully Insured

Home & Garden Repairs & Improvements

Dave: 01691 770937 or 07720 387705

Andrew: 01691 773370 or 07410 985733

E-mail: llyswen236@btinternet.com



Silhouette

Hair and Beauty Salon

Ellesmere Road
St Martins

01691 773974

<https://www.facebook.com/Silhouettehairandbeautystmartins>

SY113AZ



ELLIS



CSWEEPS LTD

MIKE ELLIS

CHIMNEY SWEEP

EMAIL - elliscsweeps@gmail.com

www.elliscsweeps.co.uk

Parkley House, The Trench

Ellesmere, Shropshire, SY12 9DT

The Institute of Chimney Sweeps

AGA & RAYBURN FLUES

CCTV INSPECTIONS

CHIMNEY REPAIRS

WOODBURNER SERVICING

CHIMNEY COWLS / TERMINALS

BIRD GUARDS



01978 710709 - Tel

07952913440 - Mob

Well Established Local Family Firm



**Birchwood Lodge, Rhoswiell, Weston Rhyn,
Oswestry. SY10 7TA**

Tel: Oswestry (01691) 772653



Posh Pooches

**Professional Dog Grooming
For All Breeds**

Also Available for Pet Sitting in your own home.

If you want to go away (even for just a day), or are working long hours and are worried about leaving your dog for too long but don't want to put them into kennels, why not leave them in their own home and I will come in and walk, feed and generally look after them while you are away.

Happy to provide a collection service for dog grooming within the village for anyone without transport.

Please call me to discuss your needs.

Telephone: **Karen Sinclair 07866 039621**
Greenfields Farm,
St.Martins SY11 3HH

**Business Support
Programme**

Management Accounts

Payroll Services

Auditing

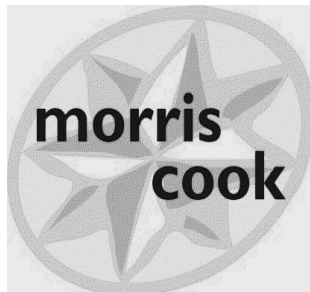
Tax Planning

Business Start Ups

Accounts Preparation

**SAGE software sales and
support**

Financial Services



**Chartered
Accountants
and
Business
Advisers**

**Offices at: Ellesmere, Oswestry,
and Llangollen**

Telephone: 01691 622098

e-mail: partners@morriscook.co.uk

www.morriscook.co.uk

BJS HARDWARE

SUPPLIES!

We stock nails, screws, drill bits and all other
DIY necessities.



We also stock bulbs in all sizes, extension
leads and various other items!

Come down to BJ's Gas Supplies to have a
look around!

Or brows our website
www.bjshardwaresupplies.co.uk

Call us on: 01691773651

June Report

On 6th June we welcomed 2 new members and 4 visitors. We had a short business meeting in which we discussed our plans for our open meeting on July 4th when we will have the Heritage Sewing Circle -

The Tudors, also a Tea Party for the elderly on 19th November, and our forthcoming outing to Grygunog Hall on August 1st.

Gobowen W.I. informed us that £177 was raised at the Derwen Fete on the parcels stall and thanked everyone for their parcels.

Our speaker for the evening was Kevin Battam from Battams Butchers in Oswestry. He demonstrated the preparing of various cuts of pork, and lamb, and how they could be used. He expertly cut up his joints of meat without even hardly looking at them, (not to be tried at home or I expect we might be minus a digit or two), whilst entertaining us with anecdotes and banter. He gave us many tips and he answered lots of questions. He was thanked by Pam Doyle.

Four of our members attended the Annual Meeting of the N.F.W.I. at The Echo Arena on the 7th June.



July Report

We had an open meeting on the 4th July which means that it was open to other W.I.'s and non members alike.

We had The Heritage Sewing Circle with Pat Roberts who presented "The Tudors". She gave us a history of the food, customs, health and education of both the rich and the poor in Tudor times. This group make all their own costumes with exquisite handy work and fabrics. The attention to detail was amazing, they showed us different types of ruff that were worn and hats, also undergarments. We had all the different parts of the costumes explained to us, including the "cod-piece", did you know they kept their hankies, or coins or jewels in them? Details from the kind of clothes King Henry VIII and his Queens wore to the lowly servants and even the mask of the plague doctor was all exact. We had a fabulous evening and they were thanked by Helen Williams.

Afterwards we had a cheese and wine buffet.

The outing to Gregynog Hall Gardens will be on 1st August, so no meeting at The Miners Institute that evening. Our next meeting will be on 5th September - The King and I with Norma Walmsley. Visitors are welcome.

MORETON GARAGE*

M.O.T.'S, SERVICING & REPAIRS



Tyres
Exhausts
Brakes
Clutch's
Cam Belts

4 Wheel Alignment

RAC Approved Repair Centre

01691 773 003

Unit 4, Moreton Business Park, Gledrid, Chirk, Wrexham LL14 5DG
Email: lance@moretongarage.com

Proprietor: Lance Collings

Precision Property

Improvements

Based in St Martins, we do the following:

- *Kitchens
- *Bedrooms
- *Plastering
- *Decking
- *Doors
- *and Full Renovations
- *Bathrooms
- *Joinery
- *Tiling
- *Flooring
- *Skirting

So if you want a business who will be neat, reliable, and tidy up after themselves then look no further – call Marty today on:

(01691) 77 26 33

www.precisionpropertyimprovements.co.uk

'The Definitive Choice'

Huw Manford

Trees & Gardens

- Hedge Trimming
- Tree Surgery
- Landscaping
- Fencing
- Micro Digger & Operator



Fully Insured

Contact:
07803 957681
01691 778566

PENTRE NURSERY

Glyn Morlas Lane, St Martins

Tel: 01691 772475

Mobile: 07759 163 865

Heathers, Conifers, Shrubs
Perennials, Roses, Fruit Trees
Summer Bedding Plants
Hanging Baskets

Compost, Bark, Manure
Weed Suppressant Membrane,

OPEN 9 - 5 EVERYDAY

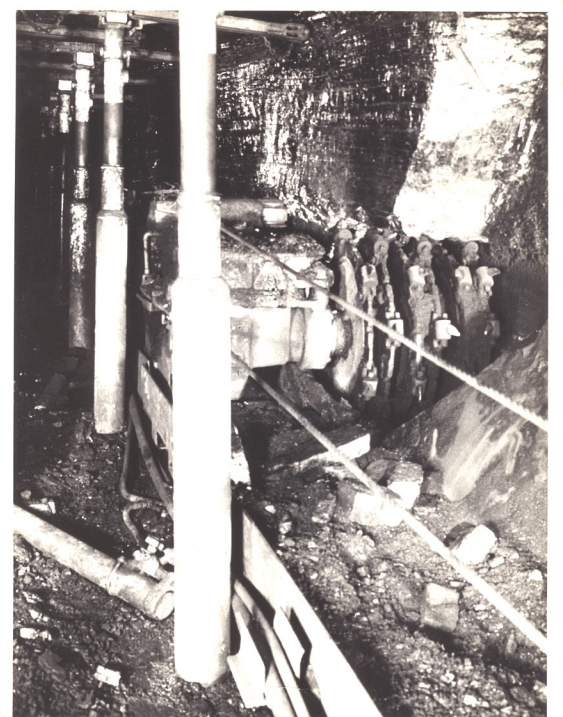
Crisis and Opportunity

You are 35 years of age. You have what you believe is a secure, steady job with an assured income that will sustain you and your family for the foreseeable future. Then someone, somewhere makes the decision that your place of work, your source of income, will be closed and the familiar, the solid base dissolves and disappears. This was the situation in 1968 when the National Coal Board decided that Ifton Colliery was no longer economically viable, This was what confronted Terry Ellis and Ken Hinton at that time. Ken was a shot-firer, the man responsible for setting the explosive charges that released the coal to be mined. Terry was an engineer responsible for the maintenance of the machinery of the mine.

The pit finished its productive life on 23rd November 1968. There then followed a few months of work to dismantle machinery, to dispose of what was possible of the stockpile of coal and then seal the mine. Some of the miners, like Ken, went to other pits and continued their life in the mining industry. Ken went to Gresford along with a number of others from Ifton and stayed there for five years until Gresford itself closed. Terry went to work for Fulwood's on the production of agricultural machinery, taking advantage of his knowledge and skill in engineering. Ken, on leaving Gresford became a chauffeur and gardener for BICC.

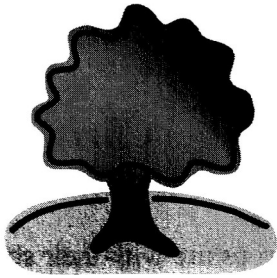
Each man's life story is unique. Though the enforced path they had to follow simply to keep an income and the wolf from the door is typical of what confronted all those facing redundancy when the pit closed, each man's solution to the problem was his own. It is interesting now, both in their eighties, that they are convinced that they would not have survived if they had gone on being mineworkers. They paint a vivid picture of the demands of the work, the dust, the heat, the noise, the physical demands. And that also gives a graphic account of the danger, of men maimed or, worse, killed. In the face of that danger miners depended on each other, for their own safety and to keep others safe. So the essential spirit of camaraderie that was entailed inevitably pervaded life beyond the pit in the village, a spirit they both feel to this day.

Both Terry and Ken look back on their lives beyond the mine with a sense of achievement. They were surprised that the feared loss of income did not materialise, even the fear of the impact of their loss of 'the ton of coal' that was the miner's perk. They both came to work in healthier environments, doing jobs that gave them pleasure and satisfaction, making careers where they had not suspected they would find opportunity. That is not to say that they regret any of their time in the pit. They speak of that still with affection and gratitude for what it gave them in skills and their humanity that served them so well later. Others may have found the transition, the loss that change brings, harder to contend with. Some took a good while simply to accept that the closure was 'for real'. There was no doubt that for individuals such as Ken and Terry, even though they knew for a while that closure was imminent, the fact of it caused a crisis, in individual lives, in families and in the St. Martins community. But, as the unfolding of Terry's and Ken's lives since illustrates, crisis can also mean opportunity. And so impressive of them both is that they seized opportunity with willing hands.



Shearing coal 16's Face Ifton

A ROBERTS



Landscaping and tree care

- Trees pruned, trimmed & shaped
- Garden clearance
- Hedge cutting
- Patios and Fencing
- All rubbish removed

01691 770054
07725 819414

26 Cherry Tree Drive, St Martins
Shropshire SY11 3EQ



Len's Plaice

Opening Times

	Lunch	Evenings
Mon	11:45 - 1:30	5pm - 9:30
Tues	Closed	Closed
Wed	11:45 - 1:30	5pm - 9:30
Thur	11:45 - 1:30	5pm - 9:30
Fri	11:45 - 1:30	5pm - 9:30
Sat	11:30 - 2pm	Closed

01691772413
Closed Bank Holiday Mondays

RIDGWAY *Rentals*

PLANT RENTAL • HAULAGE • SALES • PARTS • SERVICE



FREE LOCAL DELIVERY



MINI DIGGERS | TELEHANDLERS | LARGE PLANT | DUMPERS | ROLLERS | SKID STEERS

Contact us for Plant Hire & Used Plant Sales

01691 770171

sales@ridgwayrentals.com | www.ridgwayrentals.com

3 Parishes Big Local July 2017



Three Parishes
Big Local
Weston Rhyn • St Martins • Gobowen

Jolly Jamboree

We would like to say a big thank you to everyone who visited our stand at St Martins School's Jolly Jamboree in June. Well done to all the young people who took part in the treasure hunt, 31 of you took part. Finger scooters were awarded to the 1st, 2nd and 3rd prize winners.

The Messenger

The **Messenger** is a fortnightly what's on guide produced by Three Parishes Big Local. Following positive feedback from local residents we are pleased to confirm that we will be continuing to produce and distribute this. The Messenger is available to pick up at most public places including: Stans Superstore, Ifton Miners, St Martins Centre, Hairdressers, Keys and Lens Plaice. You can have an electronic copy sent direct to your email by signing up at messenger@big-local.org

In our first 18 editions of the Messenger we have promoted over 150 events, groups or opportunities within the area. If you have an event or activity that you would like help promoting, please let us know. In addition to the Messenger we also share local events and information on our notice boards, our website and Facebook page.



My Money Matters

We have commissioned Citizens Advice Shropshire to deliver a My Money Matters programme in your area. They will be working directly within St Martins, Gobowen and Weston Rhyn to help residents with: Budgeting, Income maximisation, Switching tariffs, Welfare benefits, Debt advice, Life events that impact on your finances: like having a baby, buying a home, starting a new job or retiring. As well as drop in sessions there will be a series of workshops, including Managing Money and Shopping habits & avoiding waste. Keep an eye on our notice-boards and Facebook page for more information including dates.

Alternatively you can contact CAB direct on 01743 280019 and ask to speak to the Community Advisor or visit: www.cabshropshire.org.uk. All drop ins and phone calls are in the strictest confidence.



Want to keep up with 3 Parishes Big Local news? Contact Bridget or Paula at Three Parishes Big Local on 01691 656882 or at info@big-local.org

Find us on Facebook and Twitter on 3PBigLocal

SCOOTING TO SCHOOL

Do you have a child that enjoys scooting or biking to school



We have been awarded a Community Chest Grant for £500 by the BIG LOCAL to buy additional storage for bikes and scooters.

The present storage will be moved off the playground. A double-sided scooter rack for 20 scooters and additional small bike scooter racks are being purchased.

All the storage will be sited off the playground behind the gates at the side of the classrooms. This will make the storage of bikes and scooters during the school day more secure and safe.

Many thanks to BIG LOCAL for the grant and Ridgeway Rentals for their contribution to the groundwork and costs.



Weston Rhyn • St Martins • Gobowen

dapol

model railway company

Dapol Limited, Gledrid Industrial Park, Chirk, Wrexham, LL14 5DG

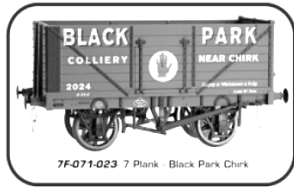
Tel: 01691 774455

Fax: 01691 778866

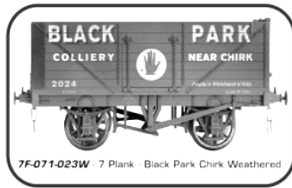
e-mail: sales@dapol.co.uk

www.dapol.co.uk

O GAUGE



7F-071-023 7 Plank - Black Park Chirk



7F-071-023W 7 Plank - Black Park Chirk Weathered

OO GAUGE



4F-071-132 7 Plank - Ruabon



4F-071-132W 7 Plank - Ruabon Weathered

N GAUGE



2F-071-036 7 Plank - Gresford Wrexham 226



2F-071-037 7 Plank - Gresford Wrexham 226 Weathered

Here's just a few local wagons that we do.
Come visit the shop to see if there is any local to you..

Opening Hours:

Monday - 10.00am - 4.00pm
Tuesday - 10.00am - 4.00pm
Wednesday - 10.00am - 4.00pm
Thursday 10.00am - 4.00pm
Friday 10.00am - 12.15pm

Gift Vouchers



Redeemable against any products in our Dapol Shop or through our telephone mail order system

They make the ideal present for the modeller of the family

dapol 15% DISCOUNT ON ALL DAPOL PRODUCTS PURCHASED THROUGH DAPOL
collectors club ANNUAL OPEN DAY 4 NEWSLETTERS PER YEAR ONLY £25 PER YEAR IN GAUGES 'N' 'OO' & 'O'

SPECIAL COMMISSION WAGONS
• YOUR CHOICE OF DAPOL BODY
• TURN AROUND IN JUST 3 MONTHS
• FROM JUST 100 CENTS PER MODEL IN OO OR N TO 35 Pk O!
• FOR MORE DETAILS CONTACT CLARE ON 01691 774455 OPTION 1 OR EMAIL: clare@dapol.co.uk

Dean Lewis

St Martins

PLUMBING & HEATING

Installation & Servicing
Central Heating Systems

Boilers

Bathrooms & Showers

Washing Machines etc

All Work Guaranteed

TEL: 01691 777408

MOBILE: 07808 909482

PANEL-FIX

Motor Body Repair Specialists

Tel: 01691 777555 / 778209

Darrell & Lee Cooke

Unit 1b St Martins Business Park

Ellesmere Road

St Martins

Oswestry

Shropshire

SY11 3BE

We have installed a new modern spray bake oven in our new premises, offering a high quality finish.

Also, we refurbish and weld plastic bumpers

OIL BOILER Service and Repairs



Specialising in

- ◆ Servicing,
- ◆ Breakdowns
- ◆ Maintenance

On all Oil Fired Boilers

OFTEC QUALIFIED

Call now for prompt service

#Stuart Jones

01691 682480 - 07940 757503