

What's on in February!

Date	Event	Venue	Time
Tues 1st	WI Marcia Meredith – Making Paper Flowers	Ifton Miners Institute Lounge	7:30pm
Sun 6th	Mothering Sunday	Ellesmere Road Church and St Martins Parish Church	10:00am
Tues 8th	IMMC	St. Martins Community Centre	7:30pm
Wed 9th	Weston Rhyn Gardening Club 'Your Lawn and How to look after it'	Weston Rhyn Institute	7:30pm
Thurs 10th	Parish Council	St Martins Centre	7:00pm
Sun 14th	Green Gym	Colliery Entrance	1:30pm
Thurs 24th	Valuation Day with Christina Trevanion	St Martins Centre	10:30am
Fri 25th - Tues 12th April	Easter Break	St Martins School	

Please let us know the time and date of events in April and May for the next edition of Village Life by no later than **Friday 11th March 2016**

If you send us an article for the next edition, please bear in mind that it will be delivered at the end of March, so any events you report on will have happened before then. If you want to mention any upcoming events or activities please make sure they are in April and May (or later).



St Martins School has welcomed new students and staff to the school recently and we have been asking how they are getting on. Here's what they had to say!

Reuben joined **Year 8** in October.

"My first impression of the school was the welcoming feel. The things I like best are my friends and my tutor, Mr Machin."

Jodie joined **Year 7** in December.

"When I first saw the school I thought it was amazing. I couldn't wait to start my first day. It was really easy making new friends because everyone made me feel welcome. Annabelle, Grace, Sophia and Kiera were the first friends I made. My favourite subject would be art because it's really fun and I think I'm good at it. I'm looking forward to spending the rest of my time here."

Annette Platt, teaching **Year 4** joined us in November.

"It's been a delight joining this school because everyone is so welcoming and helpful. My class is full of lots of little characters who are keen to learn and they were very quick to introduce themselves! It's lovely to work in a through school because many of the students have siblings in the same building and you can see that they really look out for one another - it's really touching to see."



Tammy Evans, teaching **English** joined us in September.

"When I first turned up to St Martins school and walked into reception, I was greeted with the sight of students working quietly and independently in the hub. There was a calm and industrious atmosphere and it was clear that students were very proud of their school, and committed to presenting the best first impression to all visitors. They clearly wanted to do well, and cared about their studies."

The warm and friendly atmosphere is something which makes this school unique. Teachers don't only know the names of all the students, they know their families, interests and what they excel at. Students come to their second home, not their school.

Every student fits in at St Martins School. It has a unique blend of students from all walks of life, and that is what makes St Martins School special."

Kevin Darke, teaching **Maths** joined us in January.

"Right from the start I felt welcomed into this school and I am enjoying working with the happy, confident and polite students. The staff team is a very helpful and supportive, and the whole place feels like a positive little community of its own. I'm looking forward to adding to the great work that the school does every day."



Nicola Price, teaching **Art** joined us in January also.

"I've not been here long but I already know my way around and can name the students in my class. I'd call that a success! The students are so keen to take part in my lessons - this helps me make the lessons even more fun and interesting for them. The art room walls are full of students' work (past and present) and I can see real talent. I hope to encourage their artistic spirit even more during my time here."

Kathryn Jones, Hub Manager, joined us in September

"I was first struck by how friendly everyone is, not least the students. The corridors are full of 'hello, miss and 'how are you, miss?' and it makes me smile every time. I'm able to see the contribution I make to the school and that gives me real job satisfaction. Thank you, St Martins School!"



Setting a good example for our new and existing students are our Head Boy and Head Girl in Year 11.

Ollie and Meg have been with St Martins School since Year 7 and were in our feeder school, Ifton Heath Primary School, before that – St Martins through and through! Their hard work and contribution to the school community has led them to being chosen to represent our school as Head Boy and Girl. They regularly partake in extracurricular activities run by the school such as Duke of Edinburgh and our Sports Leaders programme as well as studying hard towards their GCSE's. They have had this to say about their time in our school.

Ollie: *"This school has given me a significant introduction into the world of education providing a number of valuable courses to coincide with the quality of teaching within St Martins School. I have had so much fun at this school and have made lots of friends. We're also given trips out as a reward for our excellent behaviour and outstanding effort. There's a real family ethos; everyone knows each other."*

Meg: *"Over the years the school has opened up many opportunities such as Sports Leaders, Spirit of Leadership, DoE and Mountain Skills. If it wasn't for Mr Machin and Miss Weaver I couldn't have done these activities and become the person I am today"*

We are looking forward to welcoming many more students to our school in the future. If you are thinking about sending your child here in September or there is a mid-term move on the cards, simply give us a call on 01691 776500 and we can arrange time for you to visit and see for yourselves how our close-knit community would support and nurture your child throughout their school career.

Reminders:

February Half Term: Monday 15th February – Friday 19th February

Easter Break: Good Friday 25th March – Tuesday 12th April

St Martins Supporters Club is looking for new members. Call 01691 776500 and ask for Mrs Ellis or Miss Devismes for more information.

SUDOKU

Try this one, can you work out what the
Circle, Triangle, Star and Square is
worth?

	8					2		
				8	4		9	
		6	3	2			1	
	9	7					8	
8			9		3			2
	1					9	5	
	7			4	5	8		
	3		7	1				
		8					4	

$$\bigcirc + \triangle = 8$$

$$\bigcirc - \triangle = 4$$

$$\star + \square = 12$$

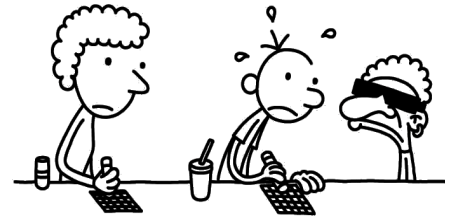
$$\star - \square = \square$$

$$\square + \square = \star$$

Here's a great picture for you to colour



The Wimpy Kid Wordsearch



These 15 words or names are all connected with the Wimpy Kid books. How many of them can you find?
Words can run from side to side, up and down or diagonally. Good luck!

Cheese Touch
Diary
Dog Days
Greg Heffley
Jeff Kinney

Loded Diper
Manny
Mom Bucks
Mrs Craig
Rodrick Rules

Rowley
The Last Straw
The Ugly Truth
Wimpy Kid
ZooweeMama

W	I	X	X	I	Y	N	S	D	R	Q	S	T	Z	M
L	P	U	R	I	M	K	I	E	Y	E	H	H	O	A
Y	N	C	S	E	C	K	P	M	L	T	M	E	O	N
L	B	I	X	U	Y	I	U	U	U	G	R	L	W	N
J	M	N	B	P	D	E	R	R	G	R	S	A	E	Y
H	C	M	M	D	J	K	T	G	I	E	C	S	E	T
J	O	I	E	F	C	Y	U	D	Q	R	R	T	M	W
M	W	D	S	I	L	T	U	G	R	X	A	S	A	I
R	O	M	R	G	R	O	W	L	E	Y	I	T	M	D
L	G	D	U	K	X	U	I	I	Z	K	G	R	A	O
J	O	E	V	S	N	I	L	S	H	H	C	A	D	G
R	H	J	E	F	F	K	I	N	N	E	Y	W	I	D
T	C	H	E	E	S	E	T	O	U	C	H	G	A	A
G	R	E	G	H	E	F	F	L	E	Y	M	I	R	Y
Y	T	T	J	T	I	P	G	W	O	C	M	K	Y	S

Time to get real



We spend nine times longer searching screens for inspiration than seeing the real deal.

New research commissioned by National Trust Wales reveals just how few of us are 'plugged in' to what's right on our doorstep, favouring to spend more time online and being stuck to our phones.

There's plenty of research out there to say that children spend far too much time on electronic devices. At 2nd St Martins Scouts there's no virtual reality; it's natural play and real fun all the way.

This year there's a host of exciting activities planned from archery to kayaking and sailing and opportunities for fortnightly hill walking in Wales and three camping trips. Most nights there's physical games to help them let off steam before bedtime.

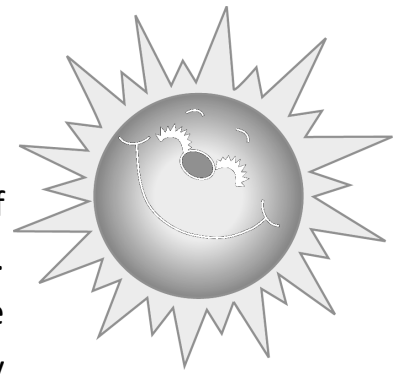
If your child is interested in joining Beavers, Cubs or Scouts, then take advantage of our free taster session before committing. Our fees are among the lowest in Shropshire, just £15 per half term thanks to the wonderful fundraising and support from the community.

Beavers/Cubs meet Mondays at 6pm to 7:30pm; Scouts meet Wednesdays 7:00pm to 8:30pm. Contact 07702 216595 if you would like to know more.

Happy New Year

2nd St Martins Scouts

ALLOTMENTS



Well readers, we are once again into the New Year, the beginning of a new garden season and as the norm these days what a wet one. We gardeners are all itching to get our spades and forks out but the weather is well against us. I was up at the allotments the other day and just walking on the pathway, the water was coming through the turf, the ground is so wet.

On a happier note the allotments holders would like to say Thank you to those of the Parish Council members who voted for us to receive a grant to buy a rotavator and grass cutter to help us keep the allotments tidy and help some of us old ones take the strain out of digging.

Also I would like to thank John Osman of Oswestry, who by the way is a St Martins man, a big Thank You to you for the very good deal, he *gave* us one of the machines.

Well on that note I will close this letter and look to the skies for some sunshine.

Tony Hall.

Chairman



Cedar Close Community Room

Weekly Activities

Mon:	10:00 – 11:00 14:00 onwards	Coffee Morning Cards	Tea/Coffee, Biscuits, Raffle & Chat
Tues:	9:00 – 14:30 19:00 – 21:00	Age UK Bingo	Games, Armchair Keep Fit, Bingo, Handy Craft, Quiz etc. including Raffle, tea/coffee
Wed:	14:00 – 16:00 19:15 – 21:00	Craft Group Historians	Knit, Crochet etc. 1st Wed of each month
Thurs:	12:00 – 14:00 14:00 onwards	Funday Cards	Tea/Coffee Games, Films etc.
Fri:	10:00 – 11:00	Coffee Morning	Tea/Coffee, Biscuits, Raffle & Chat
Sat:	14:00 onwards 19:00 – 21:00	Cards Bingo	Including Raffle, tea/coffee

Shared ownership houses coming soon!



**Bower Farm, St Martins,
near Oswestry**

**Six two-bedroom houses
available March 2016**

£33,750 for minimum 25% purchase

**To register your interest
or for more information email
bowerfarm@wrekinhousingtrust.org.uk**

Huw Manford Trees & Gardens

- Hedge Trimming
- Tree Surgery
- Landscaping
- Fencing
- Micro Digger &
Operator

Fully Insured

**Contact:
07803 957681**



BJ'S GAS

BOTTLED GAS SERVICES

BJs Bottled Gas, Unit 3A St Martins Business Park, Ellesmere Road, St Martins, Oswestry, Shropshire, SY11 3BE, Tel: 01691 773651

**Opening Hours:
Monday - Friday 09:00 to 17:00
Saturday - 09:00 - 13:00**



**Business Support
Programme**

Management Accounts

Payroll Services

Auditing

Tax Planning

Business Start Ups

Accounts Preparation

**SAGE software sales and
support**

Financial Services

**morris
cook**

**Chartered
Accountants
and
Business
Advisers**

**Offices at: Ellesmere, Oswestry,
and Llangollen**

Telephone: 01691 622098

e-mail: partners@morriscook.co.uk

www.morriscook.co.uk



A group of **St Martins Brownies and Rainbows** entered into the festive spirit with a choo-choo Christmas party on 5 December. The group joined over 200 other girls from across the Midlands to take to the tracks on a girl-only Santa Express train ride.

The girls aged between **5 and 10 years** from **St Martins** were whisked away for the festive celebration on the Severn Valley Railway where Father Christmas himself was waiting for them at Arley Station.



As well as enjoying the special girl-only train ride, the **Rainbows/Brownies** enjoyed fun and games, received a special badge to mark the occasion and a magical gift from Santa.

Casey Davies, from the **St Martins Brownies** said: "I've not been on a train. It was fun to go on the steam train. I loved meeting Santa!">

Heather Lloyd, a Girlguiding volunteer who organised the Santa Specials trips for the girls, said: "*The Rainbows/Brownies were so excited and had huge smiles on their faces as they got off the trains. Some had never been on a steam train before so it was an amazing experience for them. For me it's really important to offer Rainbows and Brownies the chance to do things out of their normal meeting place*".

Girlguiding opens up a world of opportunity to girls aged five to 25, incorporating Rainbows (ages five to seven), Brownies (seven to 10), Guides (10 to 14) and the Senior Section (14 to 25). As well as providing girls with a safe, girl-only space, the charity offers a girl-led programme incorporating everything from adventure activities to learning new skills.



**DAVE**
MEND-ALL
Est. 15 Years – Fully Insured
Home & Garden Repairs & Improvements
Dave: 01691 770937 or 07720 387705
Andrew: 01691 773370 or 07410 985733
E-mail: llyswen236@btinternet.com 

Well Established Local Family Firm

**OUTSIDE CATERING CO.**
HAZEL HALL

Birchwood Lodge, Rhoswiell, Weston Rhyn,
Oswestry. SY10 7TA
Tel: Oswestry (01691) 772653



Secure Savings & Affordable Loans

in the Three Parishes
EVERY TUESDAY

St Martins Centre 9.30am - 10:30am

Weston Rhyn Institute 12noon - 2pm

Gobowen Library 2.30pm - 3:30pm

*FREE Budgeting support
& Debt Advice signposting*

Three Parishes
Big Local

www.fairshare.uk.com

01952 200200



Silhouette Hair and Beauty Salon

(Corner of Ellesmere Road
and Green Lane)

A new Hair and Beauty Salon to
come to St Martins. Run by
Lisa Pugh-Jones

I have been qualified in all
aspects of Hair and Beauty for
the last 17 years, ten of those
years have been spent teaching
and assessing Hair and Beauty.
My qualifications are awarded
from both City and Guilds and

GTI.

I am also a Balmain Hair extension specialist.

I offer all hairdressing services from dry cuts to colour correction with prices starting from £5.

Opening times:-

Tues & Thurs 9-5 Fri 9-7 Sat 9-3

Tel: 773974



**SPECIALISING IN PROPERTY MAINTENANCE
AND LANDLORD SERVICES**

**WE CAN MAKE YOUR LIFE THAT MUCH
EASIER BY SORTING OUT YOUR
PROBLEMS FROM A LEAKING TAP TO A
FULL HOUSE RENOVATION**

FIND US ON FACEBOOK FOR LATEST OFFERS
FACEBOOK/KAPMS

LIKE OUR PAGE FOR A CHANCE OF WINNING*
£25.00 OF STANS SUPERSTORE VOUCHERS

KEITH ALLUM

01691 774011 / 07752 438 392

kapms@btinternet.com

Supporting St Martins Centre

ST MARTINS YOUTH SESSION

NEW GEN CONSOLES:

PS4, XBOX ONE

FIFA 16

ARTS AND CRAFTS

**SATURDAY
6PM TILL 8PM
£1.00 ENTRY FEE**

REFRESHMENTS AVAILABLE

St Martin's Centre,
Overton Road,
St Martin's



FRIENDS OF IFTON MEADOWS



Firstly I would like to wish everyone a Happy New Year from the Friends of Ifton Meadows.

At November Green Gym the Friends tackled the silted up pond at the top of Prices Dingle near the Railway entrance. We spent a cold damp afternoon digging out a new channel to allow the water to flow more freely. This was not an easy job for any of us but the men waded in getting wet and muddy in the process while the rest of us helped with clearing debris and helping them removing and replacing large stones that had been placed to help the flow of water. We also cleared out the gullies and drains in the Dingle itself.

Our efforts were just in time before the six gales we have had over the last few weeks hit us.

November 2015

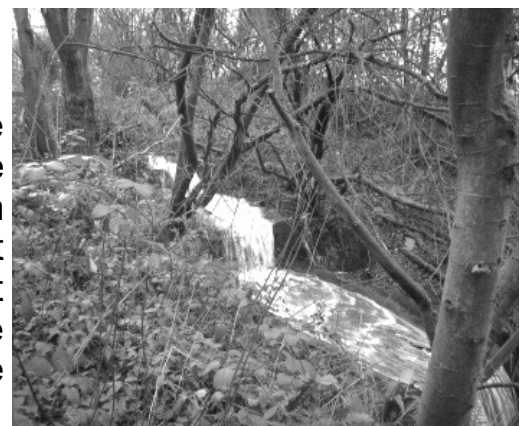


December 2015



December 2015

For those who have not been down to the Nature Reserve while the weather has been bad, the volume of water down the gabions has been spectacular both in sight and sound. We would not want to see this volume of water all the time as it tends to cause erosion on the far side of the watercourse, but the stream in spate is lovely to see from time to time.



Want to help? We meet at the Colliery Entrance on the second Sunday of the month (weather permitting) at 1.30 pm. The next sessions will be on Feb 14th and March 13th.

Alternatively, come along to one of our meetings at St. Martins Community Centre at 7.30 pm. The next meetings will be on Feb 9th and March 8th.

You can keep in touch via our page on smartins-online.org.uk or our facebook group page –Friends of Ifton Meadows.



Posh Pooches

**Professional Dog Grooming
For All Breeds**

Also Available for Pet Sitting in your own home.

If you want to go away (even for just a day). Or are working long hours and are worried about leaving your dog for too long, but don't want to put them into kennels. Why not leave them in their own home and I will come in and walk, feed and generally look after them while you are away.

Happy to provide a collection service for dog grooming within the village for anyone without transport.

Please call me to discuss your needs.

Telephone: **Karen Sinclair 07866 039621**
Greenfields Farm,
St.Martins SY11 3HH

MORETON GARAGE*

M.O.T.'S, SERVICING & REPAIRS

Tyres

Exhausts

Brakes

Clutch's

Cam Belts

4 Wheel Alignment



RAC Approved Repair Centre

01691 773 003

Unit 4, Moreton Business Park, Gledrid, Chirk, Wrexham LL14 5DG
Email: lance@moretongarage.com

Proprietor: Lance Collings

PENTRE NURSERY

Glyn Morlas Lane, St Martins

Tel: 01691 772475 Mobile: 07759 163 865

Heathers, Conifers, Shrubs

Perennials, Roses, Fruit Trees

Summer Bedding Plants

Hanging Baskets

Compost, Bark, Manure

Weed Suppressant Membrane,

OPEN 9 - 5 EVERYDAY

THE VILLAGE MAP

By Wilf Evison

There's a village in North Shropshire where they used to dig for coal.
The men would work all day and night, digging like a mole.
But now all work is finished, the Pit Head's nice and green
It's hard for some to visualise the village as it's been.

So the village Women's Institute said "We'll make a map
To remember men and where they worked in our village from way back"
So they call a Parish meeting and asked a few to help,
By stitching and embroidering a specific memory for themselves.

They cut each piece of canvas in squares of equal size
And took a picture of each building and placed them side by side,
The map was placed dead centre, with the pictures a round the side,
"That's all" they said "We've done it, now look on it with pride.



Villagers can see the way we were before they
shut the mine.

The Pit Head's gear has gone I fear, but so
has the muck and grime
In the Garden of Remembrance on the Miners'
Welfare ground
Is an old pit tub amongst the shrubs, to depict
work underground.

Book Club

A Happy New Year to all readers.

Our most recent meeting was hosted by Hilary Slater to talk about 'Olive Kitteridge: A Novel in Stories'. The book was well received by all who joined us.

Our next choice is 'The Hundred Year-Old Man Who Climbed Out of the Window and Disappeared' by Jonas Jonasson.

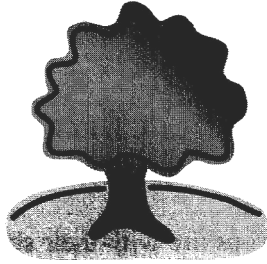
Sitting quietly in his room in an old people's home, Allen Karlsson is waiting for a party he doesn't want to begin. His 100th birthday to be precise. The Mayor will be there. The press will be there. But as it turned out, Allen will not....

Escaping, in his slippers, through his bedroom window, into the flower bed, Allen makes his getaway. And so begins his picturesque and unlikely journey involving criminals, several murders, a suitcase full of cash, Allen's earlier life is revealed. A life in which – remarkably – he played a key role behind the scenes in some of the momentous events in the twentieth century.

We will be meeting to discuss this at Helen and Keith's on 23rd February at 7.30pm.

Don't forget – all new readers welcome.

A ROBERTS



Landscaping and tree care

- Trees pruned, trimmed & shaped
- Garden clearance
- Hedge cutting
- Patios and Fencing
- All rubbish removed

01691 770054

07725 819414

26 Cherry Tree Drive, St Martins
Shropshire SY11 3EQ



Len's Plaice

Opening Times

	Lunch	Evenings
Mon	11:45 - 1:30	5pm - 9:30
Tues	Closed	Closed
Wed	11:45 - 1:30	5pm - 9:30
Thur	11:45 - 1:30	5pm - 9:30
Fri	11:45 - 1:30	5pm - 9:30
Sat	11:30 - 2pm	Closed

01691772413

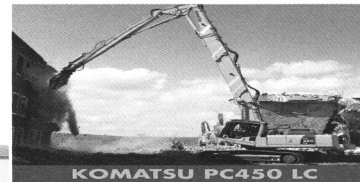
Closed Bank Holiday Mondays

RIDGWAY Rentals

PLANT RENTAL • HAULAGE • SALES • PARTS • SERVICE



KOMATSU D61 PX



KOMATSU PC450 LC



KOMATSU HM300-2



KOMATSU PW160-7



Komatsu WA380



KOMATSU PC340 LC-7

FREEPHONE 0800 51 51 55

01691 770 171

www.ridgwayrentals.com

DECEMBER

Members and friends enjoyed our

annual Christmas meal on the 1st December at The White Lion, Whittington. The newsletter was distributed and read. President Shirley Willis reminded us of the carol service on 7th December at Whittington. The exhibition Cup was won by Alice Wilding, 2nd was Isobel Banham, 3rd was Myfanwy Dulson. The Competition Cup was won

by Shirley Willis, 2nd was Alice Wilding, 3rd was Ann Sadler. The winners also received a £10 Marks & Spencer gift voucher each. Myfanwy Dulson said grace and after dinner we had a quiz. The raffle proceeds will go to St Martins First Responders. At the end of the evening Shirley thanked everyone for their help during the year and for voting her as President again for 2016. She wished us all a Happy Christmas and New Year.

JANUARY

At our meeting on 5th January 2016 our President Shirley Willis py New Year and welcomed everyone including 2 visitors newsletter was read and discussed including observer tickets to on in June. Also some Bursaries that members can apply for from Jean, Isobel, Gill and Ann who brought in 24 Fish and Ch made for new born babies in Africa who only have newspaper against the cold, hence the name. Also on display were twiddle and Morfydd for Alzheimer patients at the Royal Shrewsbury Hospital. Ann informed us that £52 was raised at the Christmas meal raffle which will go towards our donation to the St Martins First Responders. Our speaker for the evening was Sandra Balmer a glass artist who displayed and talked about her work. She worked on a piece of stained glass to show us what is involved in creating such beautiful pieces. She was thanked by Alice Wilding. The competition of a slice of Christmas cake was won by Shirley Willis, 2nd was Jean Lunt, 3rd was Isobel Banham. The exhibition of a Christmas card with a snowman was won by Jude Williams, 2nd was Alice Wilding, 3rd was Jean Lunt. The evening ended with games of bingo. On 2nd February our speaker will be Suzanne Ellison on Energy Healing. Visitors and new members are very welcome.



Women's
Institute

Fish 'n' chip babies

WI have also been busy knitting baby jumpers and hats for babies born in the poorest areas of Africa which are wrapped in newspaper to keep the babies warm when mothers have no clothes for them, hence the name fish'n'chip babies.

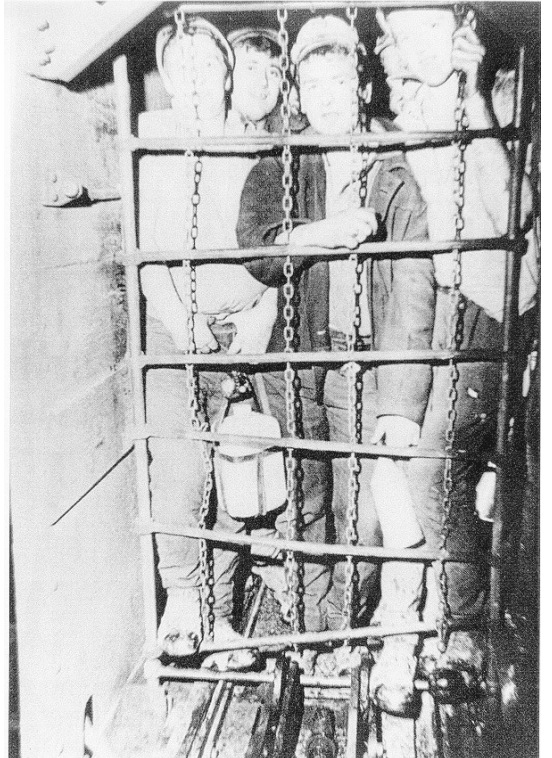
We have also sent twiddle muffs to the Royal Shrewsbury Hospital for dementia and chemotherapy patients.



'A Village O.A.P'

There is a statistic somewhere that says that as life passes the average person moves house eight times. This takes us along life's journey from the home of our birth, through such as marriage and birth of children, change of career, and then to retirement. To have made such a string of moves all within a short distance of St. Martin's gives a special insight into the life and development of the village community. This 'Village O.A.P.', whose vitality, energy, alertness and sense of independence are a great example that belies the title she has given to herself, has indeed lived in and around the village almost continuously during her long life.

When I called at her home to meet her for the first time she showed me an aerial photograph of St Martin's taken around 1946, a view astounding for the few buildings there were to be seen, and a testament to how considerably the village community has grown since then. There clearly was Ifton Colliery at the top of the picture but surrounded by fields far more extensive than they are now. Like many in St. Martin's our



V.O.A.P.'s husband worked at the mine, maintaining and operating the cage that lowered the miners to their work. Their first home of their own after marrying in 1957 was in Glyn Morlas in a cottage with no mains water, drinking water coming from a spring at the back of the house and water for general purposes pumped from the river

in front of the house. 'And if the river was in flood we couldn't use it because they took the pressure off the sewage works upstream! We had to wait a couple of days.' 'And how did you heat your water?' 'By means of a boiler next to the fire grate or in the big boiler in the wash house for washing and baths. It was cosy and warm in there for having a bath.' Her mother's Dolly Tub, in which clothes were pounded with a brass posher, is now in use as a plant pot in our V.O.A.P.'s garden. They lived with the constant sound of flowing water. She talked too of the lovely sense of community in Glyn Morlas in those days, of taking the children for picnics by the river, of the freedom the children had. Nor was there a car. You walked here and there or cycled.



Changes came, of course, with an initial move to be more centrally situated, no doubt for the sake of the children and a more convenient family life, in what was Burial Lane (and later became Green Lane - I wonder why!), via council houses in Greenfields and Oak Drive, a brief stint in Gobowen ('not as friendly as St. Martin's'), then houses near to the Keys pub (then the Cross Keys) and in Kimberley Lane. So, here we have a person thoroughly versed in the changes that have brought the village to where it is now, changes she has witnessed close at hand. This is no more marked than in the list she has of the dozens of shops there used to be, many of them, such as bakers and grocers, in direct competition with each other, no doubt cultivating the loyalty of their customers. 'You bought across the counter and you could put what you bought to be paid for later.' (What we do nowadays with credit cards?). She witnessed the growth of Stan's, remembering well Stan himself and speaking warmly of how the business at Stan's is still very clearly a family business with its roots in and close concern for the community.

Her childhood memories are still vivid. 'There was a fence by a house in Clarke's Lane that you could somersault over. And we attached a long rope to a telegraph pole across the main road at the end of Clarke's Lane for us all to skip. We roamed the woods by the railway from the pit and put ha'pennies on the line so that they got squashed into pennies.' She attended the school that is now the Doctor's surgery and recalls the surgery in its home in the Alms Houses by the parish church, with the



district nurse living in and doing her work from one of the alms houses further along.

FROM TOP OF IFTON - KILLSMERE RD	ON FRC
SHOPS IN ST MARTINS 1930s-40s-50s	POST OFFICE MRS
PHILLIPS - UNDERTAKER	CHARLIE - BARBER
WRIGHTS - GROCERIES	BLACKSMITHS - EVIS
CARBUTT - HONEYSTAD - HARRY - FRUIT - VEG	GRINDLEYS - FISH
REG DRURY - TAXI	SOUTHERNS (HARRIS) S
BILL EVANS - GARAGE	TOLL BAR - CO-OP -
CO-OP - BUTCHERS	USHERS - MOORS - BAKE
CO-OP - GROCERIES	CHURCH LANE :-
BIKESHOP, FISH SHOP, FISH CHIPS { FISH } WET { HAIR }	ARTHUR WILLIAMS - BUTCH
JESSE TAYLOR - WHOLESALE MARKET GARDENS	DRS SURGERY - J T
TAYLORS - GROCERIES ETC	GLYN MORRIS
CHAS WRIGHT - BAKERY	MINNIE BAKER -
PENBERTONS - COBBLERS	
VAUGHANS - COTTONS, WOOL, BRIC A BRAC	
PRESTONS (RIGBYS) BAKERY + GROCERIES	
CO-OP - DRAPERY + GROCERIES	
CO-OP - BAKERY	
WILFRID JONES (LATER CYRIL) GROCERIES	
WOODCOCKS - NEWS AGENTS	
BILL EVANS - GARAGE	
ARTHUR (NATTIE) WILLIAMS CIG + SUNDRIES	
SANDALLS - FISH & CHIP SHOP	
TAKEN OVER BY STAN'S	
STAN'S GENERAL STORE	
BOOKIES - BEHIND STAN'S	
GREPPY'S BOOKIES	

Much has changed in the village and in her personal life but despite the inevitable wistfulness that such change must bring, a sense of loss and a yearning for the old times, there is still a very clear love of life, optimism and forward-looking in her, in itself a compliment not only to herself but also to the sympathetic environment that has kept her and her own children flourishing in this community throughout her life. For me, this is another local person who endorses, yet again, our decision to come and live here. Don Borland



Weston Rhyn • St Martins • Gobowen



The Three Parishes Big Local Partnership would like to say a big “THANK YOU” to all the Community Groups and individuals that helped us with enveloping and delivering our 2016 calendars. We have had some very positive feedback from some local people and we hope that you are all finding the calendar useful. We have a few calendars left over – if you would like any additional calendars, please contact our Co-ordinator, Bridget.

Last autumn, we reported in Village Life that the Three Parishes Big Local Partnership had awarded a grant of £5,000 to the local Community First Responders towards the cost of replacing the car that they use to provide this valuable service to our communities. The new car is now on the road – look out for it in our area!

We ran the latest sessions of our “Everyday First Aid at home” training in Gobowen in November and the Partnership is planning to continue to make this training available for any interested residents or Community Groups. Please contact our Co-ordinator, Bridget, know if you would be interested in attending any training and she will let you know about course dates when they are arranged.

Fairshare Credit Union has changed their Service Point times in the Three Parishes Big Local area. You can now visit them every Tuesday at the times shown below:



9:30 – 10:30	St Martins Centre
11:00 – 12:00	Gobowen Library
12:30 – 13:30	Weston Rhyn Institute.

Our two grants schemes, the Community Chest for grants up to £500 and the Big Grants Scheme for grants up to £5000, still have funds available for Community groups, activities or projects. Please get in touch with us if you have an idea for a project that we could fund.

And finally, the Partnership members were sad to say goodbye to our Community & Youth Worker, Andy Rimmer, who left us in early January. We wish Andy all the best for a successful future with his business venture. We will shortly be recruiting to fill the vacancy left by Andy’s departure.



If you have any ideas or would like to get involved with 3 Parishes Big Local, to keep up to date with the latest 3 Parishes Big Local news, or for more information,

Contact the Big Local Co-ordinator, Bridget Laraway:

Write to: Qube, Oswald Road, Oswestry, SY11 1RB	Tel: 01691 656882
Email: b.laraway@qube-oca.org.uk	Check out our website : www.big-local.org
Follow us on twitter: 3PBigLocal	Like our facebook page: 3PBigLocal

Restoring the Marches Mosses



Photo courtesy of Tim Walter

We are consulting with local communities and site users of Fenns', Whixall & Bettisfield and Wem Mosses to understand what you feel might be appropriate ways of raising the profile of the nature reserve and how this fits into your own vision of the future for the region.

Please come along to any of these local events to give us your views :

Whixall Social Centre Wednesday 10th Feb between 7.30pm and 9pm

Bettisfield Village Hall Thursday 18th Feb between 6pm and 9pm

Bronington Primary School Tuesday 23rd Feb between 6pm and 9pm

You can also fill in a questionnaire and leave your feedback online at:

www.the.meresandmosses.org.uk

follow **'Meres and Me'** and **'Restoring the Marches Mosses'** at the top of the page.

(Gallwch hefyd ddod o hyd i fersiwn Gymraeg yma)

CHIROPODY/PODIATRY FOOTCARE CLINIC

01691 238014

AT HAIR BY REBECCA MAY
OVERTON RD. ST MARTINS

Jane Armstrong HCPC Reg CH22098

All welcome,
downstairs surgery
Footcare treatment
and advice
Tailored to your
requirements



THURSDAY APPOINTMENTS ONLY

Evolution Electronics

Established 1997

Computer problems solved.

Repairs, Installations,
Troubleshooting,
Internet, Friendly Advice
and Training.

Just phone me to discuss.

No Job too small.
Also available Evenings and
Weekends by Appointment.

Tel Stephen Roberts
07802654582

PANEL-FIX

Motor Body Repair Specialists

Tel: 01691 777555 / 778209

Darrell & Lee Cooke

Unit 1b St Martins Business Park

Ellesmere Road

St Martins

Oswestry

Shropshire

SY11 3BE

We have installed a new modern spray bake oven in our new premises, offering a high quality finish.

Also, we refurbish and weld plastic bumpers

OIL BOILER Service and Repairs



Specialising in

- ◆ Servicing,
- ◆ Breakdowns
- ◆ Maintenance

On all Oil Fired Boilers

OFTEC QUALIFIED

Call now for prompt service

#Stuart Jones

01691 682480 - 07940 757503